

# YSOFT MFX ULTIMATE READER



## THE MOST UNIVERSAL RFID READER ON THE MARKET

The YSoft MFX Ultimate Reader is the ideal solution for secure, two-factor identification verification and combines Legic and HID technologies in just one device, making it the most universal USB reader on the market. The accompanying mobile app holds the user's credentials ensuring that the user's personal biometric or PIN is securely stored on their mobile device.

The MFX Ultimate Reader provides a sanitary solution that eliminates the need for staff to touch any surfaces to identify themselves.

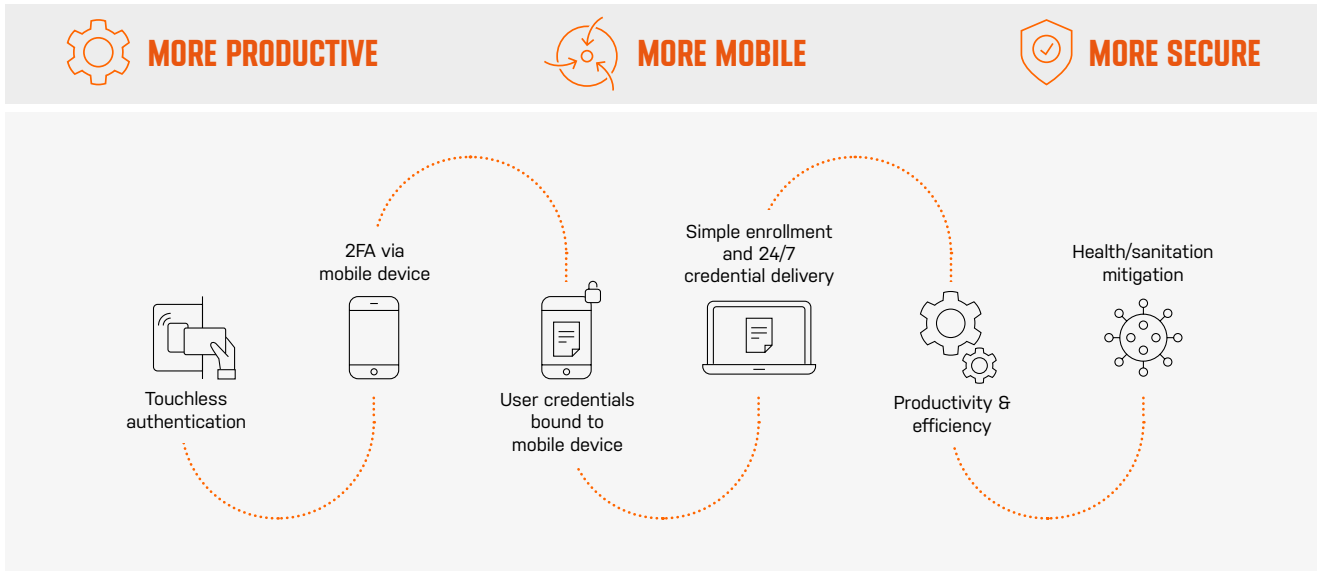
### HIGHLIGHTS INCLUDE

- Uses the YSoft Mobile Connect™ app (free to download on iOS and Android) and YSoft Connect ID™ credentials making it easy for users to have their identify verified and credentials private. Identity cards can also be used
- Enclosed housing with a small footprint and RGB LED indicator lights
- In-field customizable and upgradable
- Custom configuration tool and card auto detection allows for fast and easy set up
- Multi-length, detachable cables and mounting kits available
- Strenuously robot-tested in-house to guarantee 100% performance reliability and comes with free six-year product-lifetime warranty

Y Soft designs, tests and manufactures the YSoft MFX Ultimate in the European Union and provides global certifications and logistics through warehouses located in the Czech Republic, USA, China and Singapore.

# DELIVERING SECURITY, EASE OF USE AND CONVENIENCE

With the MFX Ultimate Reader's capabilities, organizations get the security of two-factor authentication without worrying about GDPR compliance as the user's mobile phone provides the credentials. Users have a convenient way to authenticate themselves without touching any surfaces.

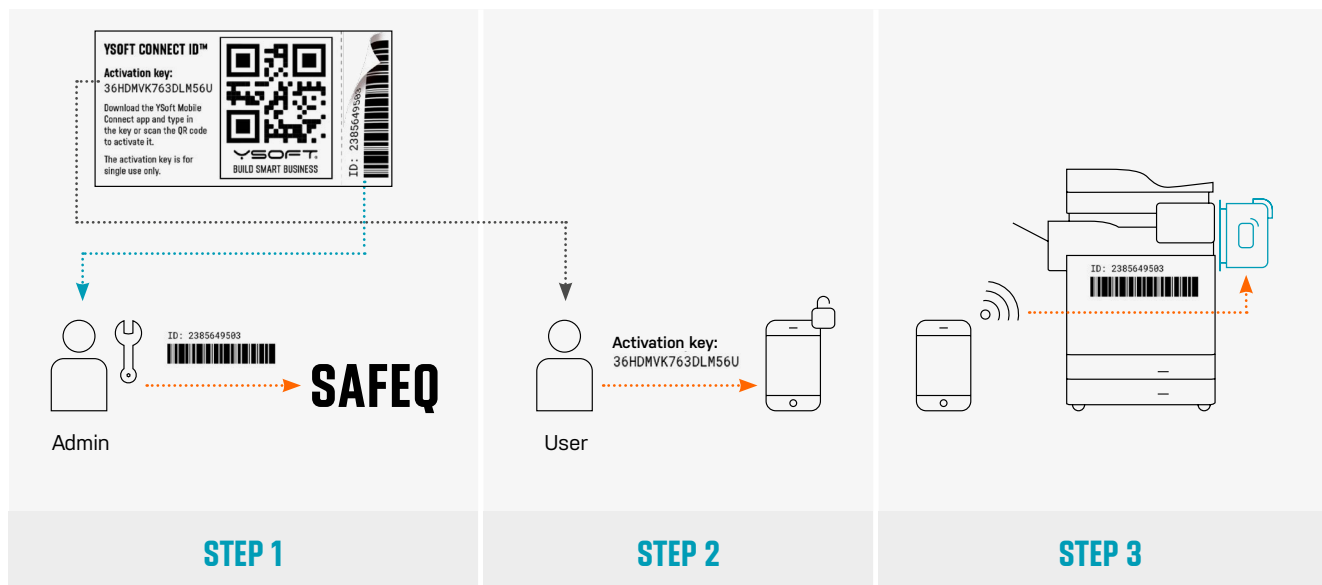


## HOW IT WORKS

The MFX Ultimate solution consists of three components:

- YSoft MFX Ultimate Reader (hardware)
- YSoft Mobile Connect (mobile app)
- YSoft Connect ID (user credential vouchers)

- 1 The print administrator provides the user with the activation key portion of the credential voucher (or electronically) and stores the ID portion in an Active Directory similar to a traditional ID badge number.
- 2 The user enters the activation key (or scans QR code) in the Mobile Connect app.
- 3 The user is now set up for authentication at the MFD via the mobile device.



# TECHNICAL DATA

Reader Technology	Contactless
Frequency	2.4 GHz / 13.56 MHz / 134.2 kHz / 132 kHz / 125 kHz
Housing	Material ABS
Dimensions	86 mm × 51 mm × 19 mm
Power supply	5 V via USB
Current consumption	max. 500 mA
Temperature range	Operating: +5 °C to +35 °C, Storage: 0 °C to +50 °C
Reading distance	Depending on the card technology and environment RFID: 30–100 mm, BLE: < 1 m
Host interface	USB 2.0 full speed (12 Mbit)
OS support	Windows 2000 and higher, Linux kernel 2.6.32 or higher
Modes of operation	USB keyboard emulation, USB virtual COM port
User interaction	Beeper, RGB LED
Relative humidity	Operating: 20% to 85% non-condensing, Storage: 8% to 85% non-condensing
Certifications	CE (Europe) FCC (USA) ISED (Canada) UKCA (UK) ACMA+Radcomms (AU, NZ) IDA (Singapore) MIC (Japan)
Model number	MUS3078
Annualized failure rate	< 0.5%
Weight	61 g

## NOTES

- Reading of data from LEGIC prime MIM22, LEGIC advant ATC128-MV210, ATC256-MV210, ATC512-MP110, ATC4096-MP310 cards are not supported due to the end-of-life phasing out of legacy technologies by Legic.
- Key delivery via Legic Orbic configuration files (VCP) supported.
- Legic SAM-63 (Launch) and SAM-64 (Delaunch) cards supported.
- Processing of multiple HF cards at the same time supported.
- Due to technology constraints, only a single card type of the ISO14443-B standard at a time is possible.
- Usage of Legic Prime cards together with ISO14443-A/B cards with random UIN is limited.
- Protocol 117 should not be used for user identification, it is a special protocol intended as an aid for card testing and some limitations may apply.
- Indala option cards not supported.
- Reading of Mifare Plus sectors requires customization.

## MOBILE AUTHENTICATION (NFC 13.56 MHZ, BLE 2.4 GHZ)

### BLE

- YSoft Connect ID
- Legic Connect BLE Central Role
- Legic Connect BLE Peripheral Role
- BLE transparent mode Central Role
- BLE transparent mode Peripheral Role

### NFC

- YSoft Connect ID
- Legic Connect HCE

## YSOFT MOBILE CONNECT APP

Search for the YSoft Mobile Connect app on iOS and Android app stores.



Product	YSoft MFX Ultimate
External Part no.	YSQB0-003-078x



## YSOFT CONNECT ID

Product	YSoft Connect ID – 5 pcs	YSoft Connect ID – 100 pcs
External Part no.	YSQK0-068-0000	YSQK0-067-0000

### YSOFT CONNECT ID™

Activation key:  
36HDMVK763DLM56U

Download the YSoft Mobile Connect app and type in the key or scan the QR code to activate it.

The activation key is for single use only.



## CARD TECHNOLOGIES

# LF (134.2 KHZ / 132 KHZ / 125 KHZ)

- EM4000 and compatible (EM 125 kHz, EM Prox, UNIQUE, EM LF, EM4100, EM4102, EM4200, MIRO, manchester f/64 and compatible, Q5 and Hitag configured to EM4xxx compat. mode)
- ProxLite (ISO ProxLite, Casi-Rusco, GE Interlogix)
- Paradox (PosiProx)
- Nedap
- AWiD (AWiD Prox)
- Pyramid (Farpointe, Pyramid MAX)
- Deister
- Datasec
- G-Prox (G-Prox II)
- ioProx (Kantech ioProx)
- PAC
- KeyPAC
- URMET (FDI)
- Cardax (Gallagher)
- Jablotron
- Noralsy
- Keri
- IDTECK (Star)
- NexKey (Nexwatch)
- ISO FDX-B and compatible (EM4005, EM4105, H4005, H4105, ISO 11784/85, Animal ID)
- Cotag (Cotag Active, Cotag Passive)
- Tiris (Tiris/HDX)
- Tiris RO (Tiris/HDX)
- Tiris RW (Tiris/HDX)
- Hitag 1
- Hitag 2
- Hitag S (Hitag S256, Hitag S2048)
- EM4050 (EM4150, EM4350, EM4450, EM4550, V4050)
- EM4050 RO (EM4050 configured to passive read only mode)
- Q5 (Titan, Q5, Q5B, Atmel T5555, Atmel T5555B, Atmel T5557, Atmel T5577, T55x7)

## INDALA

---

- Indala (Indala Prox, Indala ASP, Indala ASP+, Motorola / Indala, Indala FlexPass, FlexCard, FlexTag, FlexISO, FlexKey, FlexISO XT)
- Indala Custom
- Indala W26 - format 10022
- Indala W27 - format 10251
- Indala ABA2 - format 11037
- Indala Lite - format 17531
- Indala Kantech - format 15024
- Indala ESMI - format 1771x
- Indala ECR W26 - format 10324
- Indala ECR ABA2 - format 11045

## HID PROX

---

- HID Prox (ISO Prox II, ProxKey, ProxKey III, DuoProx, Prox Card II, SmartISO Prox, ProxPass, Micro Prox, Smart DuoProx)
- HID Prox User Defined Format

# HF (13.56 MHZ)

## LEGIC

---

- Legic Prime data read (6000 series) (Legic RF standard, MIM 256, MIM 1024)
- Legic Advant data read (6000 series) (Legic Advant ATC/CTC, ATC256-MV410, ATC1024-MV010, ATC1024-MV110, ATC2048-MP110, ATC4096-MP311, ATC4096-MP312, AFS4096-JP, CTC4096-MP410, CTC4096-MM410)
- Legic KGH
- Legic Interflex ID
- Legic Access

## ISO 14443A

---

- ISO 14443A UIN (Generic ISO14443-A UIN, SLE66CLX320P UIN, SLE 55R04 / 08 UIN, Smart MX UIN, Jewel UIN, Topaz UIN)
- Mifare Classic data read (Mifare Classic, Mifare Standard, Mifare 1K, Mifare 4K, Mifare 1k and 4k EV1, Mifare Emulated Card, Mifare Mini)
- Mifare DESFire data read (Mifare DESFire D40, Mifare DESFire EV1, Mifare DESFire EV2)
- Mifare UIN (Mifare Classic UIN only, Mifare Standard UIN only, Mifare 1K UIN only, Mifare 4K UIN only, Mifare 1k and 4k EV1 UIN only, Mifare Emulated Card UIN only, Mifare Ultralight UIN only, Mifare Ultralight UIN only, Mifare DESFire D40 UIN only, Mifare DESFire EV1 UIN only, Mifare DESFire EV2 UIN only, Mifare Mini UIN only, Mifare Plus UIN only)
- Legic Advant ISO 14443A UIN (Legic Advant ATC/CTC UIN only, ATC2048-MP110 UIN only, ATC4096-MP310 UIN only, ATC4096-MP311 UIN only, ATC4096-MP312 UIN only, AFS4096-JP UIN only, CTC4096-MP410 UIN only, CTC4096-MM410 UIN only)
- FIPS201 CHUID

## ISO 14443B

---

- ISO 14443B UIN (Generic ISO14443-B UIN, ASK GTML UIN, ASK GTML2 ISO, SLE6666CL160S UIN, SR176 UIN, SLIX 4K UIN, TOSMART P0032/64 UIN)
- CEPAS CAN

## ISO 15693

---

- ISO 15693 UIN (Generic ISO15693 UIN, EM 4135 UIN, ICODE SLI UIN, ICODE SLI-S UIN, LRI UIN, LRI12 UIN, LRI64 UIN, LRI128 UIN, LRI2k UIN, Tag-it UIN, Tag-it HF-I UIN, SRF55VxxP UIN, SRF55VxxS UIN, KSW TempSense UIN, Tag-it UIN)
- Legic Advant ISO 15693 UIN (Legic Advant ATC/CTC UIN only, ATC128-MV210 UIN only, ATC256-MV210 UIN only, ATC256-MV410 UIN only, ATC512-MP110 UIN only, ATC1024-MV010 UIN only, ATC1024-MV110 UIN only, CTC4096-MM410 UIN only)

## INSIDE CONTACTLESS

---

- Inside Contactless data read (PicoPass 2k(s) ISO15693-2, PicoPass 32k(s) ISO15693-2)
- Inside Contactless UIN (PicoPass 2k UIN only, PicoPass 32k UIN only)
- HID iClass UIN (HID iClass UIN only, HID iClass SE UIN only, HID iClass SR UIN only)

## FELICA

---

- FeliCa UIN (RC-S860 UIN only, RC-S863 UIN only, RC-S885 UIN only, RC-S888 UIN only, RC-S889 UIN only, RC-S860 UIN only, RC-S890 UIN only, FeliCa Lite RC-S965 UIN only, FeliCa Lite-S RC-S966 UIN only, RC-SA01 UIN only)

## HID HF TECHNOLOGIES

---

- HID iClass (HID iClass Elite)
- HID iClass SE (HID iClass SE Elite)
- HID iClass SR (HID iClass SR Elite)
- HID iClass SEOS (HID iClass SEOS Elite)
- HID DESFire SE (HID DESFire SE Elite) HID Mifare
- HID Mifare SE (HID Mifare SE Elite)